

## eviXscan 3D WideRange 65



### High efficiency and accuracy for scanning large objects

The eviXscan 3D **WideRange 65** scanner has been designed for precise quality control of large elements (from 300 to 1200 mm [12" to 47"]) in the shortest possible time. **WideRange 65** needs only 1.2 second for taking a single 3D scan. With a scanning range (575 x 290 x 240 mm [22.5" x 11.5" x 9.5"]) it reduces the number of scans necessary for capturing shapes and dimensions of large parts.

High resolution of cameras (8.9 Mpix) allows exceptional scanning results over such a large range. **WideRange 65** provides the density of scanning points of 54 pts/mm<sup>2</sup> and its accuracy reaches 0.03 mm (parameter P<sub>5</sub> in accordance with the VDI/VDE guideline 2634 Part 2).

The possibility of its easy integration with a cooperating robot enables full automation of the scanning process. Minimizing the number of scans needed during inspection is a very important factor on production lines where time to scan and generate a QC report is limited.

The **WideRange 65** is a perfect tool for quality control applications, reverse engineering and rapid prototyping tasks of larger parts.

# eviXscan 3D WideRange 65 scanner

## Key features

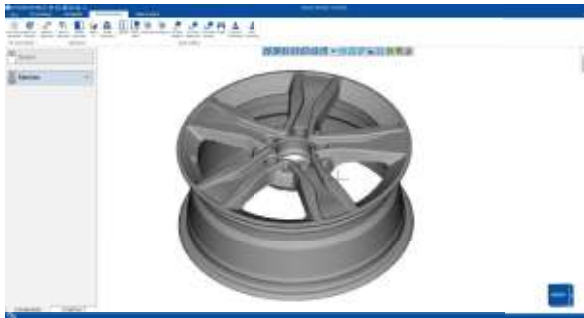
- High scanning quality and accuracy with large working area
- Short scan acquisition time
- Easy integration with robots and cobots
- Excellent value for money



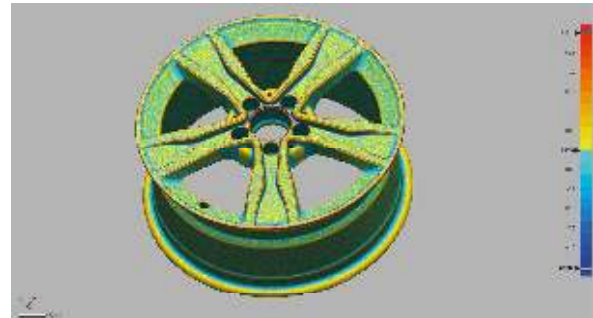
## Technical specifications

Measuring range	575 x 290 x 240 mm 22.5" x 11.5" x 9.5"	Software	eviXscan 3D Suite
Point density	54 pts/mm <sup>2</sup>	Export formats	stl, ply, obj, asc, bin
Scanning accuracy	0.03 mm*	Operating system	Windows 10 (64-bit)
Minimal scanning time	1.2 second	Computer connection	USB 3.0
Light source	Blue LED	Hardware requirements	CPU i7, 32 GB RAM, NVMe SSD 480 GB
Cameras' resolution	8.9 Mpix		

\*Accuracy determined with the use of the standard VDI/VDE 2634, Part 2, 4.1 P<sub>3</sub>



View generated from eviXscan 3D Suite



View generated from Geomagic Control X

## A rich set of accessories



\*The proportions in the photos are not preserved

The standard delivery kit includes eviXscan 3D Suite software with USB dongle, flash drive with manual and a QuickStart guide, the set of 25 mm [0.98"] markers (1000 pcs), tripod, A2 calibration board, 5 m [16 ft] cable harness (USB 3.0 and power cord), DC power supply, scanner handle and transport case. Optional accessories include a table with a load capacity of 200 kg [440 lb] and a column stand.